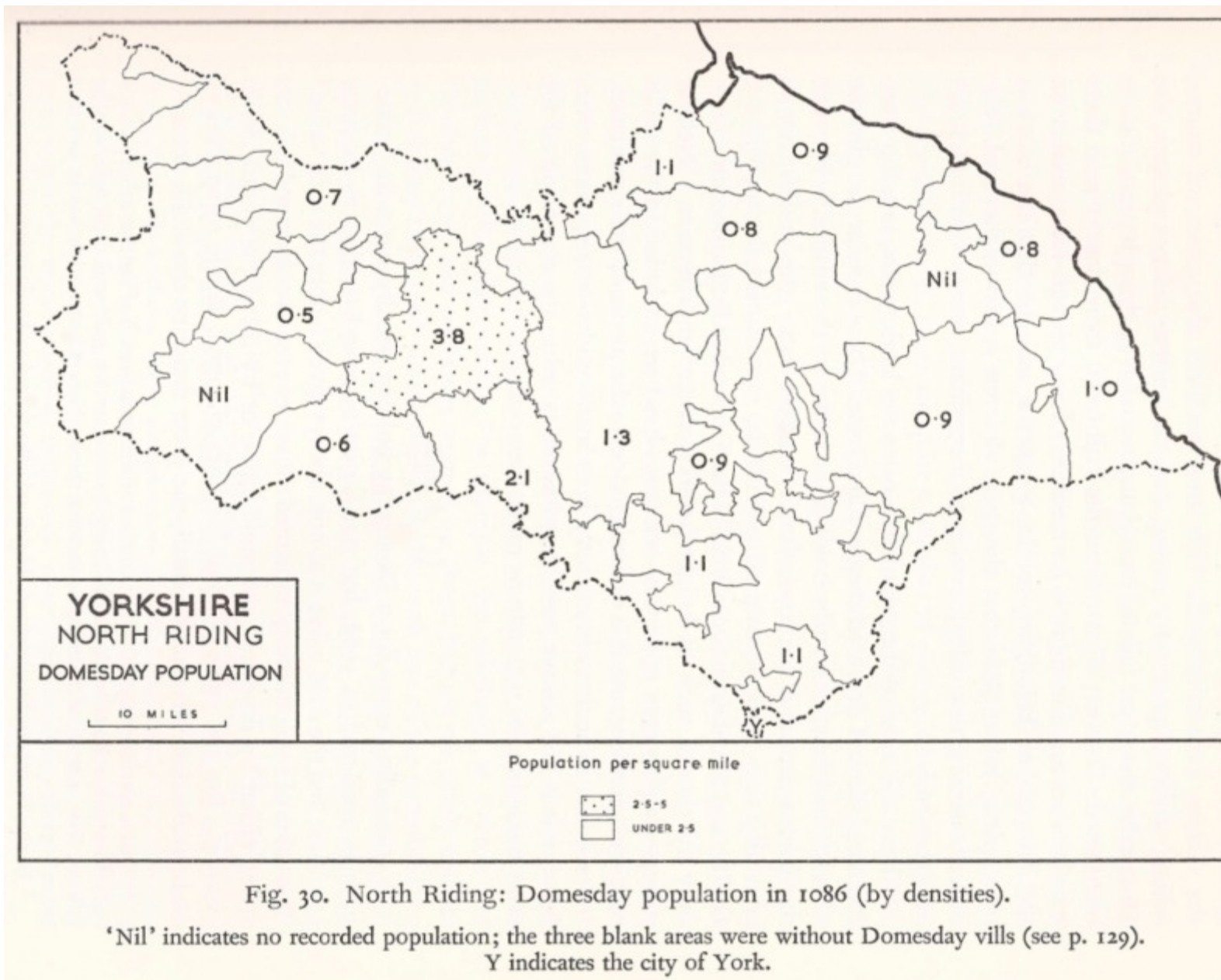


Fig. 21. North Riding: Domesday wapentakes.

Any reconstruction of the wapentake boundaries can only be hypothetical; the pecked lines indicate the boundaries that are especially so. The probable internal divisions of *Dic*, *Maneshou* and *Langeberge* are marked (see p. 87). In addition to *Terra Alani Comitis*, Count Alan also held land elsewhere in Yorkshire (see Fig. 36). Y indicates the city of York.

Taken from I.S. Maxwell, 1962, 'Yorkshire: The North Riding' in H.C. Darby & I.S. Maxwell (eds), *The Domesday Geography of Northern England* (Cambridge University Press)



Taken from I.S. Maxwell, 1962, 'Yorkshire: The North Riding'
 in H.C. Darby & I.S. Maxwell (eds), *The Domesday Geography of Northern England* (Cambridge University Press)

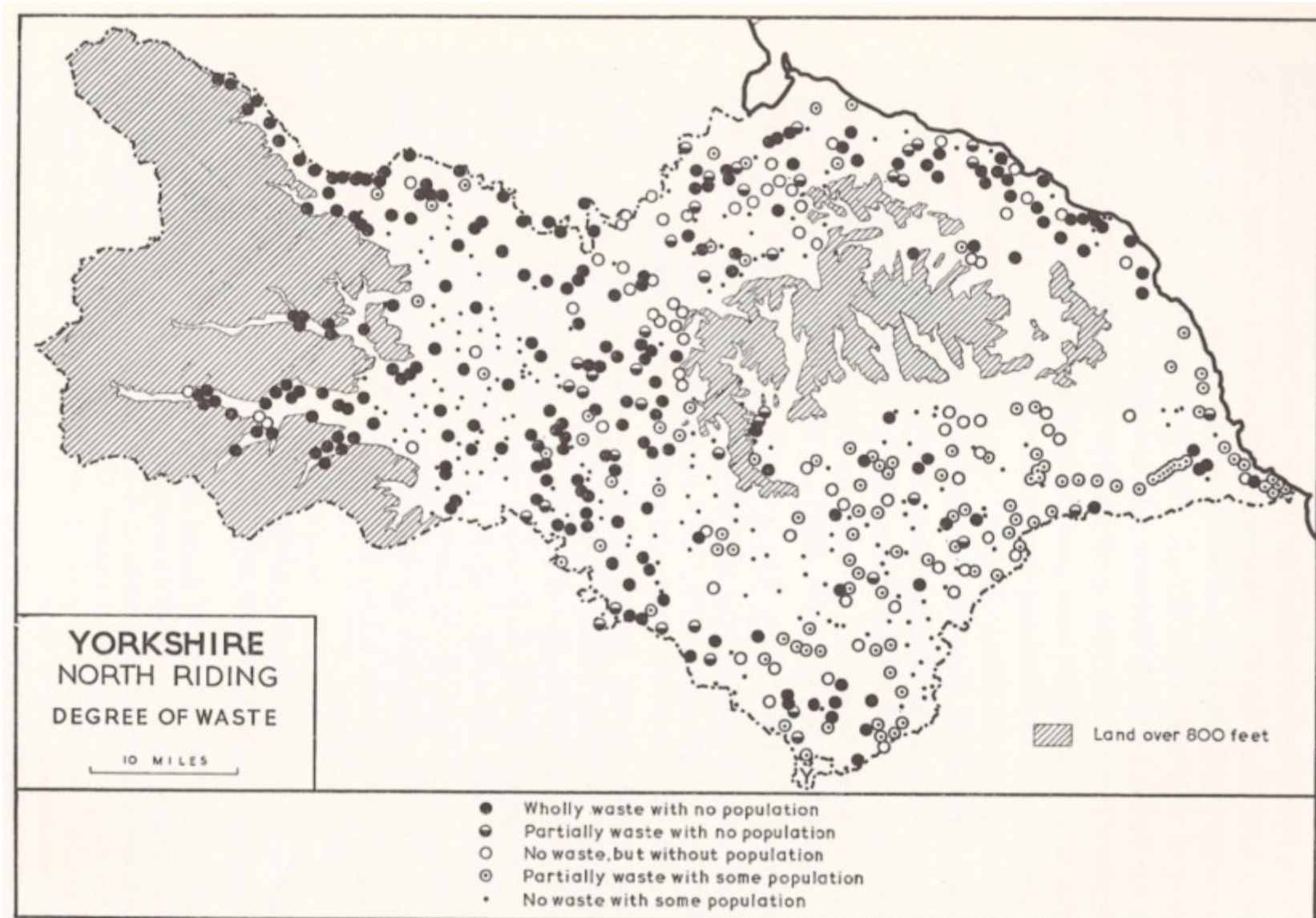


Fig. 35. North Riding: Degree of waste in 1086.

Y indicates the city of York. For the number of symbols, see p. 139, note 5.

Taken from I.S. Maxwell, 1962, 'Yorkshire: The North Riding'
in H.C. Darby & I.S. Maxwell (eds), *The Domesday Geography of Northern England* (Cambridge University Press)

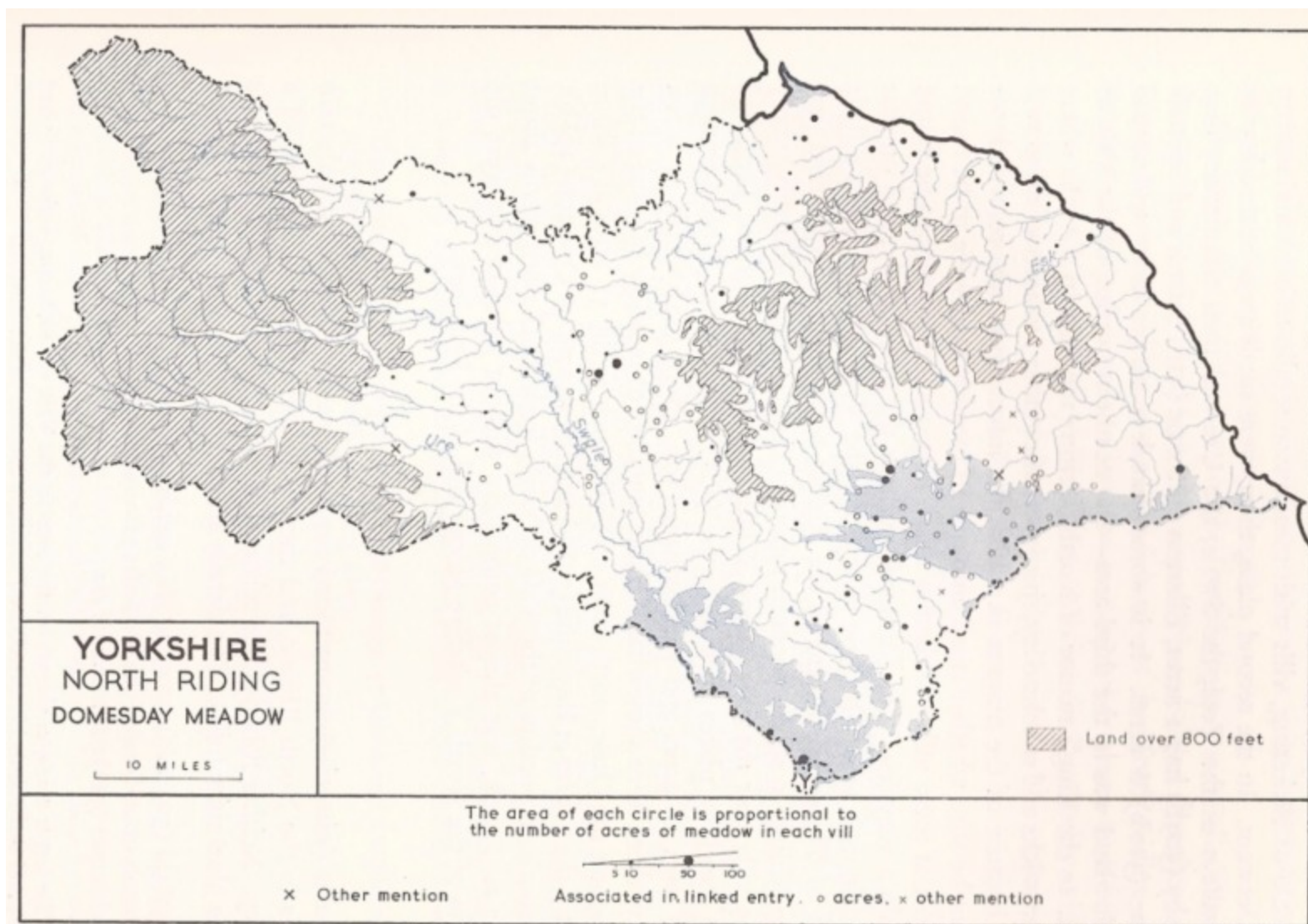


Fig. 32. North Riding: Domesday meadow in 1086.

Areas of alluvium and lowland peat are shown in blue; rivers passing through these areas are not marked.
Y indicates the city of York.

Taken from I.S. Maxwell, 1962, 'Yorkshire: The North Riding'
in H.C. Darby & I.S. Maxwell (eds), *The Domesday Geography of Northern England* (Cambridge University Press)